



## Acme Sanitary Ware Co Ltd


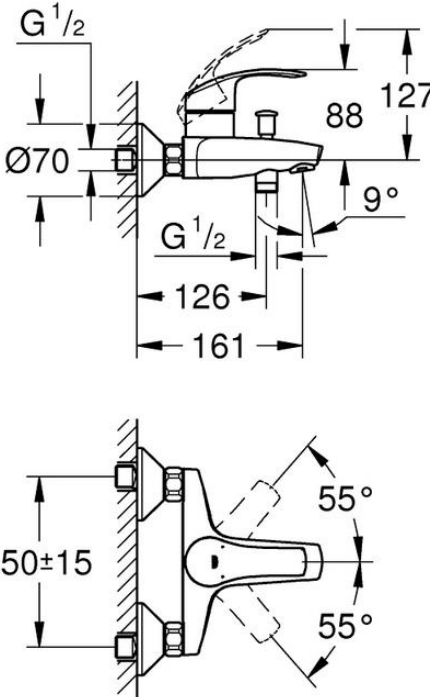

Acme Building, 22-28 Nanking Street, Kowloon, Hong Kong  
 Tel: 2388 7171 Fax: 2710 8012  
 E-mail: acme@acmesanitary.com.hk  
 Website: www.acmesanitaryware.com.hk



Pure Freude  
an Wasser

PROJECT		REF		REV	ITEM CODE	
LOCATION		DATE			PAGE	

## SANITARY WARE SPECIFICATION SHEET

Item Descriptions	GROHE (Germany) "Eurosmart" Chrome plated single-lever bath & shower mixer 1/2"	Illustration/ Drawing
Dimensions	L161 x W150 x H127 mm	 
Model	33300002	
Finish / Material	Chrome Plated	
Country of origin	Thailand	
Manufacturer	GROHE Limited	
Supplier	Acme Sanitary Ware Co. Ltd Mr. Eric Wong/ Mr. Don Yuen	
Contact Tel/Fax	(852) 2388-7171 / (852) 2710-8012	
E-mail	acme@acmesanitary.com.hk	
Website	www.acmesanitary.com.hk	
<b>"Eurosmart"</b> <b><u>Single-lever bath/shower mixer 1/2 "</u></b> <ul style="list-style-type: none"><li>· wall mounted</li><li>· metal lever</li><li>· <b>GROHE SilkMove</b> 35 mm ceramic cartridge</li><li>· with temperature limiter</li><li>· <b>GROHE StarLight</b> chrome finish</li><li>· adjustable flow rate limiter</li><li>· automatic diverter: bath/shower</li><li>· mousseur</li><li>· integrated non-return valve in the shower outlet 1/2"</li><li>· S-unions</li><li>· metal wall escutcheons</li><li>· protected against backflow</li></ul> 		

Note:  [Unboxing 33300002](https://www.youtube.com/watch?v=-BCWz0LgXlw) <https://www.youtube.com/watch?v=-BCWz0LgXlw>

\* All information of the above is for the reference only. No prior notice is made if any changes.



## Acme Sanitary Ware Co Ltd

Acme Building, 22-28 Nanking Street, Kowloon, Hong Kong  
Tel: 2388 7171 Fax: 2710 8012  
E-mail: acme@acmesanitaryware.com.hk  
Website: www.acmesanitaryware.com.hk



Pure Freude  
an Wasser

PROJECT		REF		REV	ITEM CODE	
LOCATION		DATE			PAGE	

## SANITARY WARE SPECIFICATION SHEET

### GROHE EUROSMART

#### GROHE'S NUMBER 1 IN PREMIUM PERFORMANCE

For almost 2 decades, its legendary quality has made the GROHE's Eurosmart range the obvious choice for planners, architects and plumbers. Making it the number 1 worldwide with over 30 million sold. With its wide range of designs and functionalities, its long-lasting GROHE SilkMove Technology and German engineering know-how, Eurosmart is valued for every kind of project – bath, kitchen, commercial, large-scale or small. Eurosmart: always a first class choice since 1999.



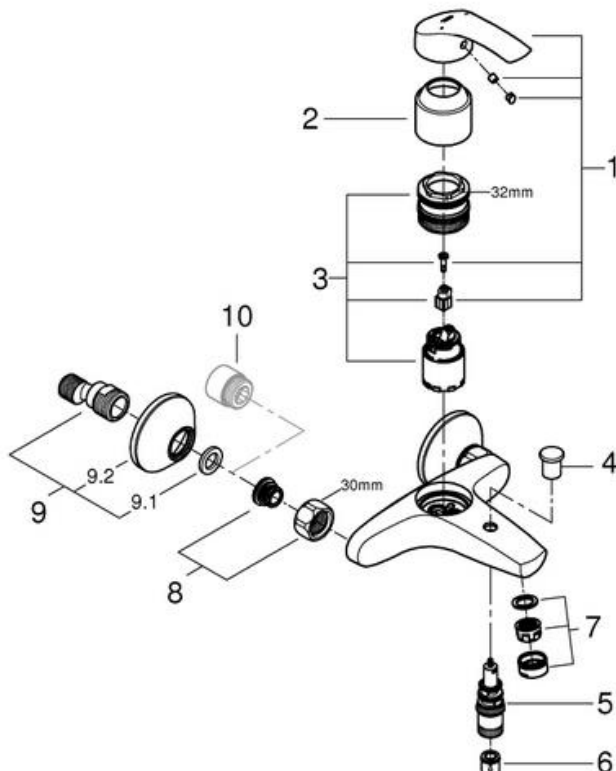
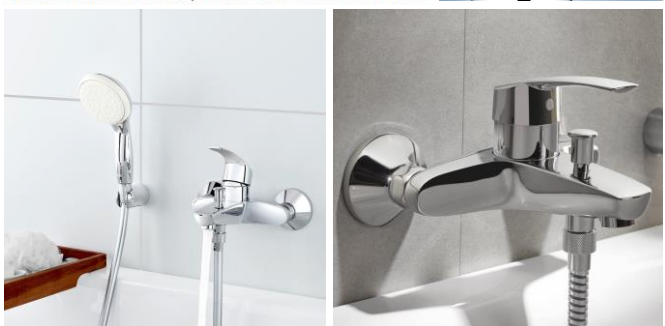
#### GROHE SilkMove cartridge technology for smooth handling

This premium tap comes with a continuously variable water temperature and volume adjustment technology, ensuring effortless lever operation even after years of use.



#### Easy to clean thanks to the GROHE StarLight chrome coating

Just wipe the tap down with a dry cloth – the ultra smooth surface finish is scratch resistant and ensures a lasting luminous sheen. You'll save plenty of time cleaning while your tap always looks shiny and new.



Pos.-nr.	Prod. description	Order-nr.
1	Lever	46898000
2	Cap	46899000
3	Cartridge	46374000
4	Diverter knob	65648000
5	Diverter	65655000
6	Non-return valve	08565000
7	Mousseur	13952000
8	Screw connection 1/2"	45044000
9	S-union	12075000
10	Extension 3/4", 20 mm	0713000M*
11	Socket spanner	19332000*
12	Special spanner	19377000*

\* Optional accessories

10	11	12	32mm	30mm

Note:

\* All information of the above is for the reference only. No prior notice is made if any changes.



Waterworks Department

道七號入境事務大樓 48 樓  
Location: Tower, 7 Gloucester Road, Wan Chai, Hong Kong

本署檔號 : ( 2 ) in WSD 3321/2020 T/J(796/2020)  
Our ref.  
來函檔號 :  
Your ref.


電話 :  
Tel.  
傳真 : 2824 0578  
Fax.

23 July 2020

### Approval of "GROHE" Bath/Shower Mixer (General Acceptance No. C20200609)

Your letter ref. WRC/2253 dated 24 June 2020 refers.

Having considered the test report ref. J24968 issued on 9 March 2020 by Nutek Systems (HK) Ltd., this Authority accepts that the fitting described below complies with, and its use when correctly installed does not contravene, the Waterworks Ordinance and Regulations.

**Name of Manufacturer:** Grohe AG  
**Country of Origin:** Thailand  
**Brand:** Grohe  
**Details of Fitting:** 1/2" Single lever bath/shower mixer  
**Model:** 33300XX2  
(where the digits "XX" denote the code of colour)  
**Body Markings:** **GROHE**  
  
**Expiry Date:** 12 January 2025

This Authority hereby permits the use of the above fitting in fresh water plumbing systems subject to full adherence to Waterworks installation requirements. In particular, you are required to draw your customers' attention to the following requirement-

"The cold water supply to the fitting shall be drawn from the same source that supplies the hot water apparatus so as to provide a balanced pressure and to obviate the risk of scalding in the event of a restriction or failure in the water supply." AND

"The shower head or handspray should not be placed in submerged conditions and should be securely fixed to the original position after use."

A condition of this acceptance is that the fitting to be installed shall be replicas of the sample as certified by the testing agent mentioned above and without modifications. This acceptance may be withdrawn at any time if the standard of the fitting installed fails to meet that of the approved sample or if the fitting is found to be unsuitable for use in fresh water plumbing systems.

This acceptance is only applicable to the main body of the fitting, unless otherwise specified.

For the use of the fitting in any project, the General Acceptance Number of this letter must be quoted as a means of identification of acceptance of the fitting by this Authority.

Should you have any enquiries, please contact our Engineer Mr. Terry KUNG at tel. no. 3583 4086.

Yours faithfully,



(CHAN Chung-kun)

for Director of Water Supplies

Encl.

c.c.    WSD 3321/1/82    ] - without catalogue  
         ME/MC            ] - with soft copy only